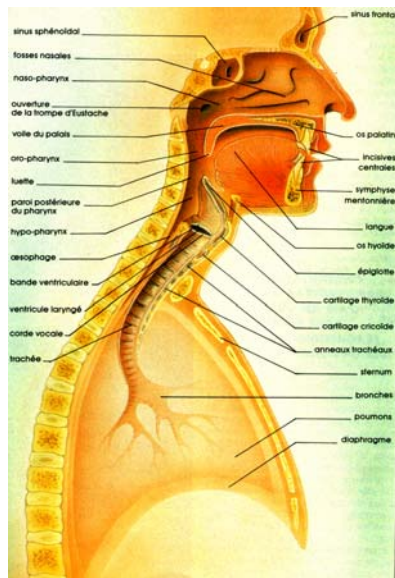
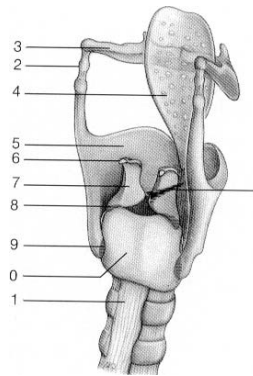
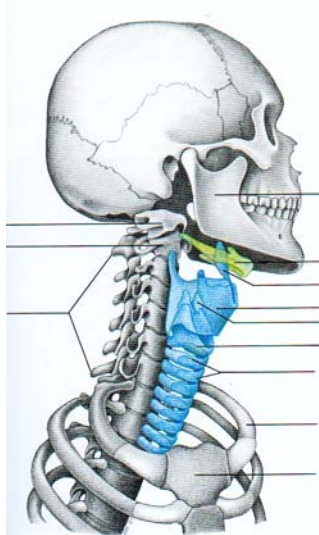


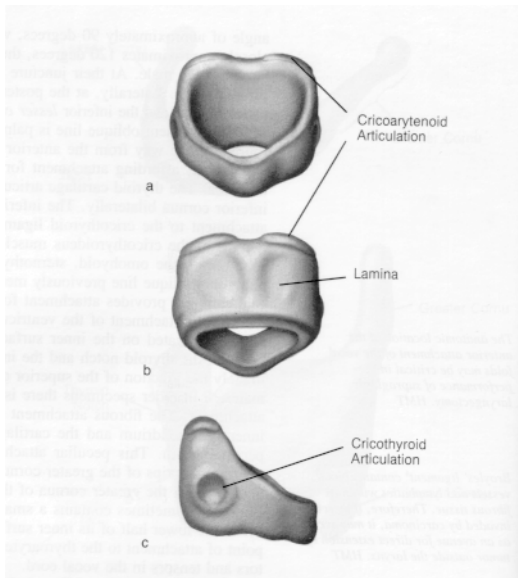
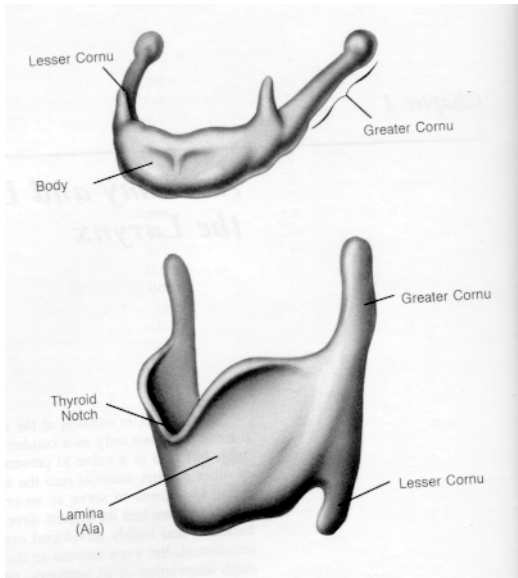
Anatomie Physiologie de la Phonation

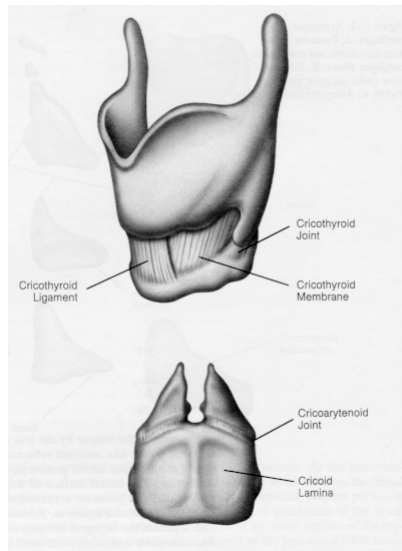
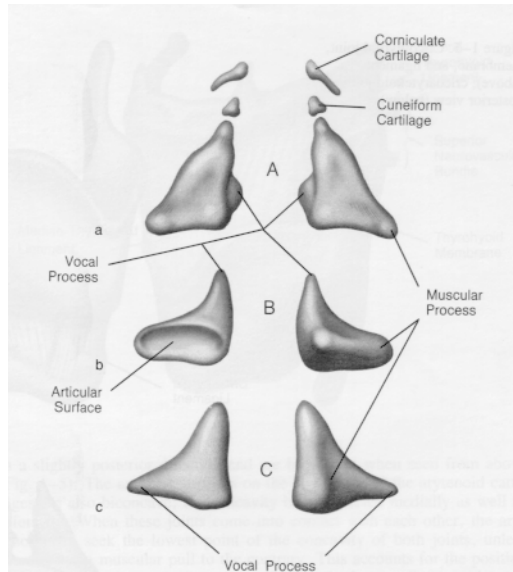


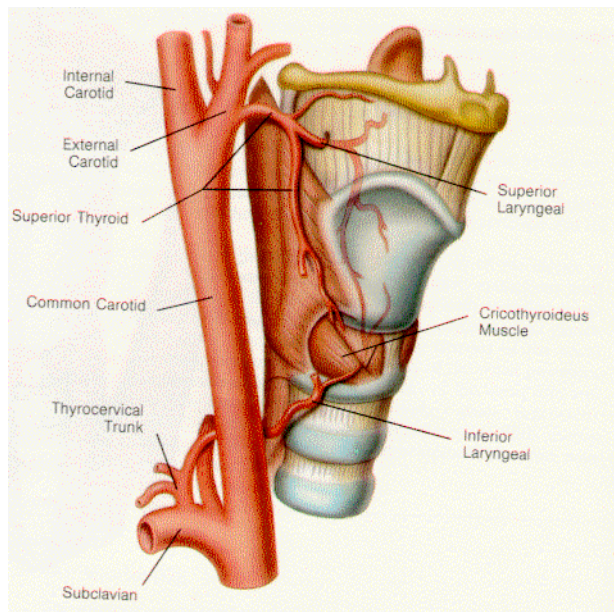
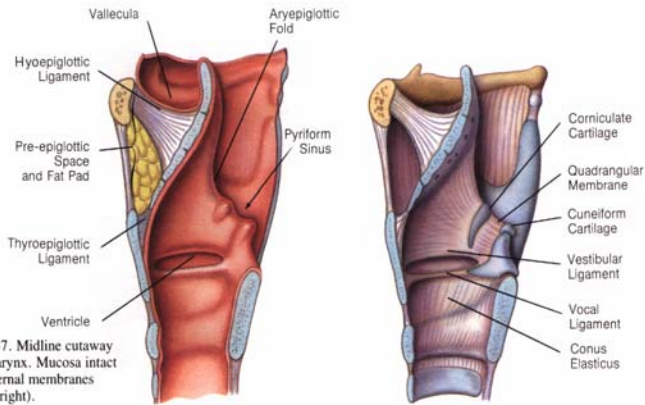
Ecole d'Orthophonie Marseille
2003-2004

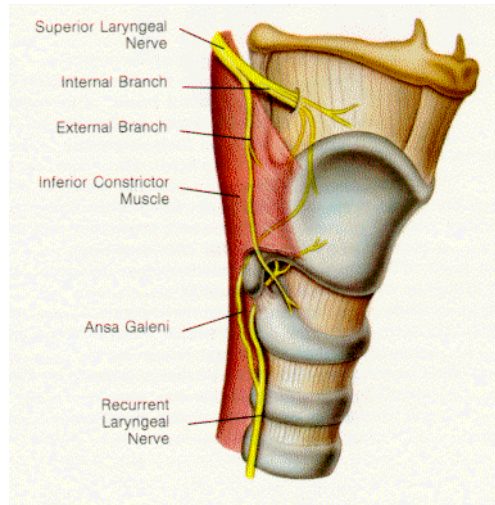




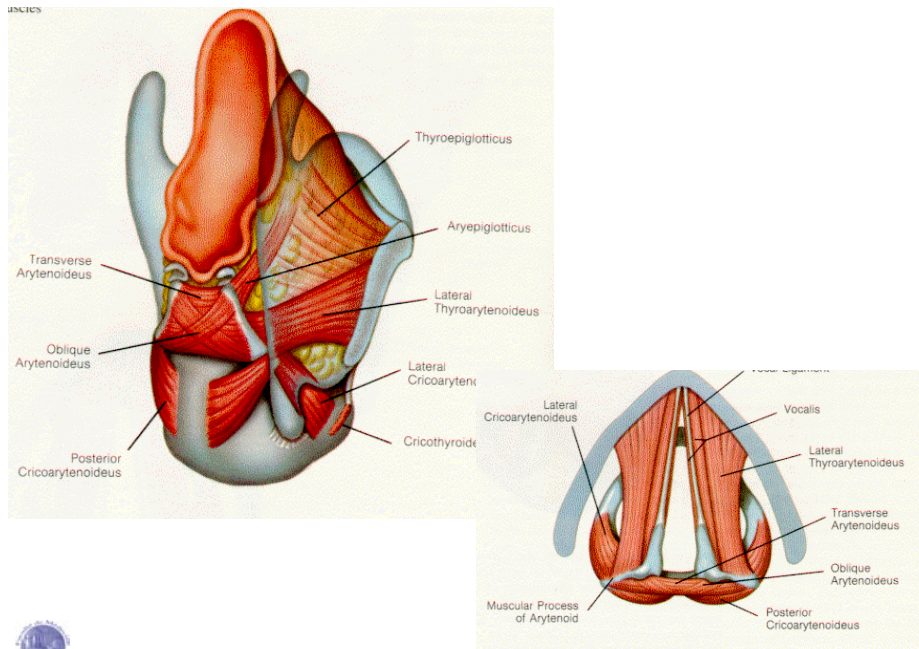


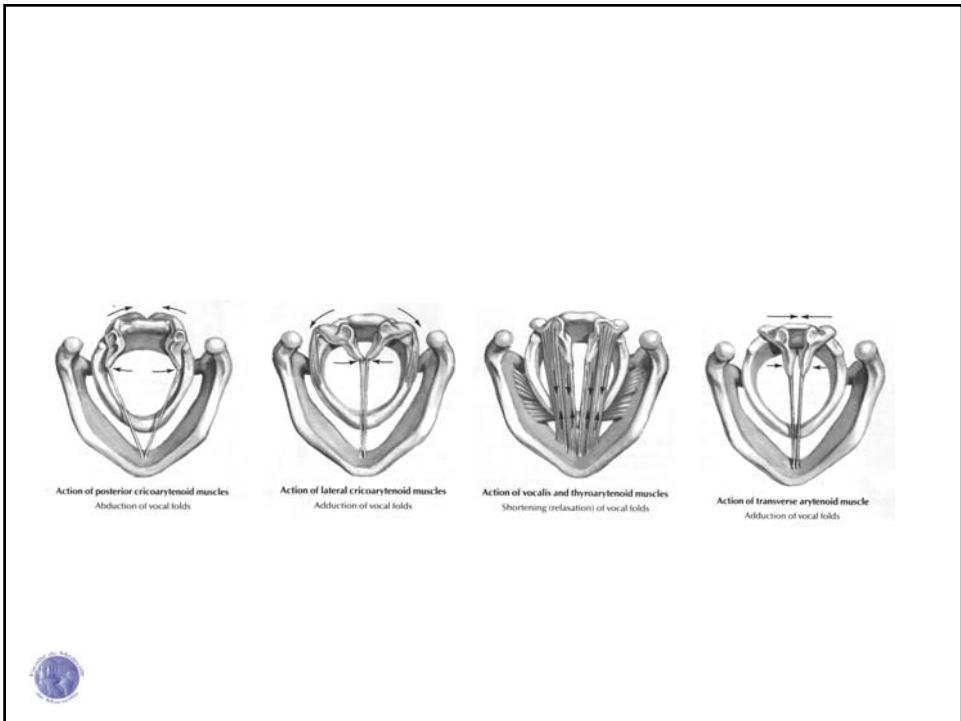




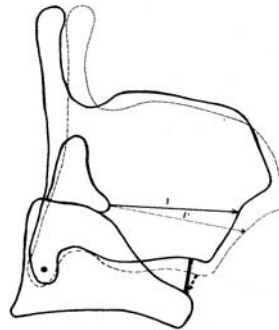
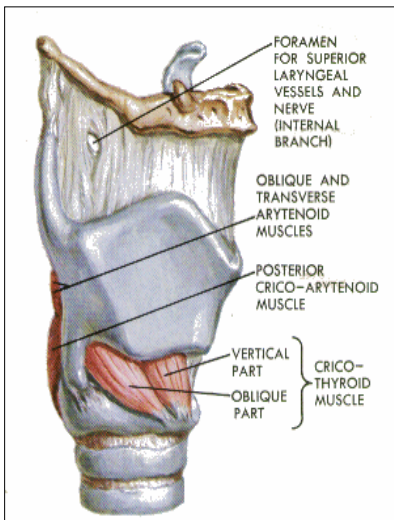


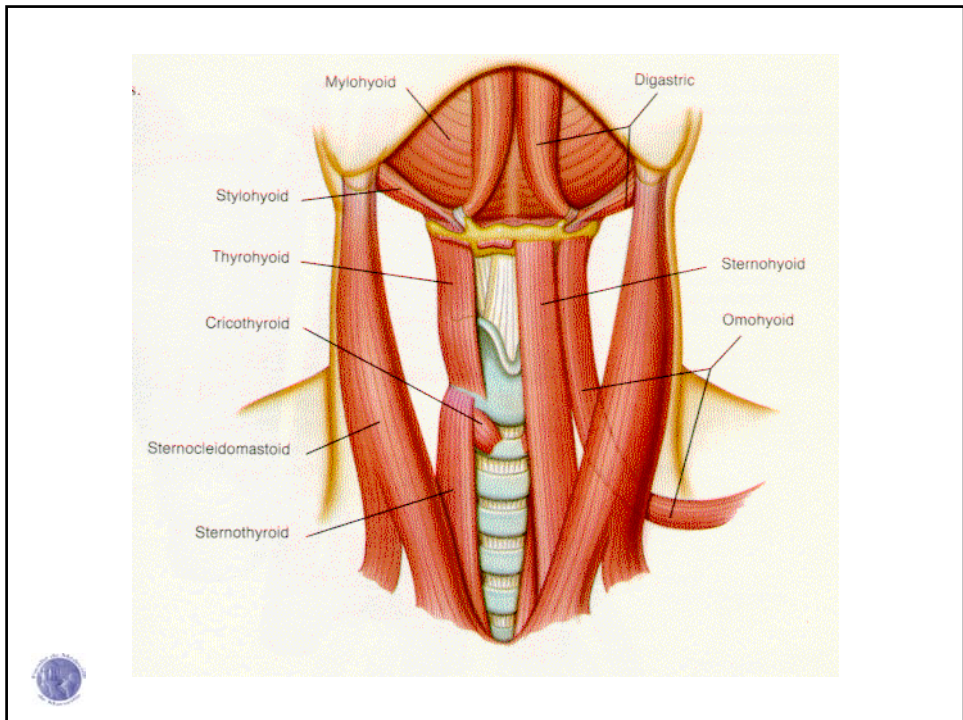
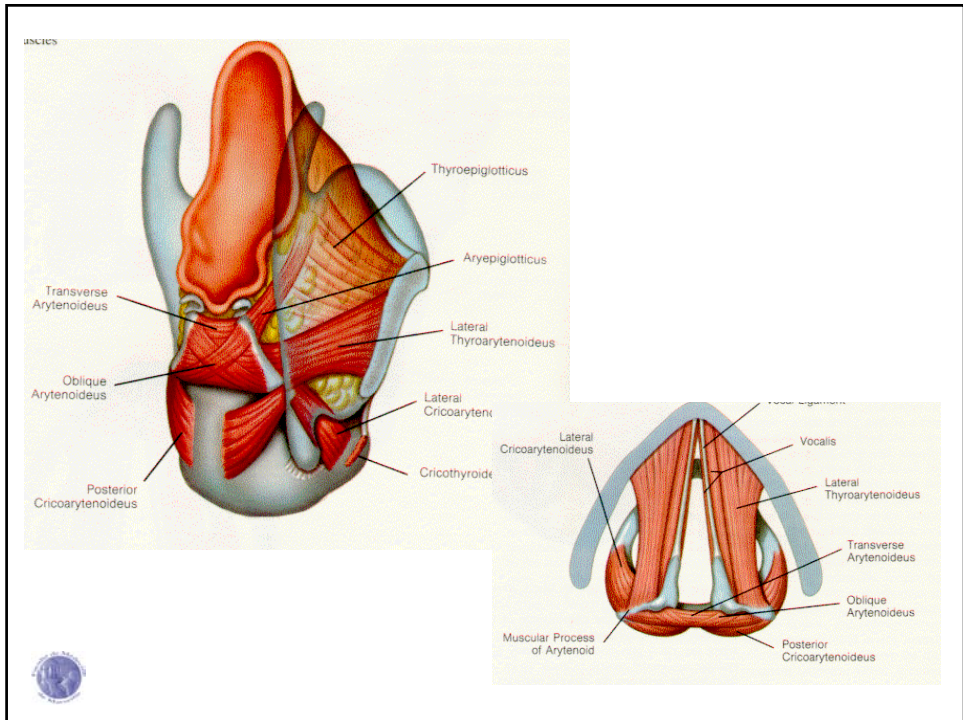
abscess

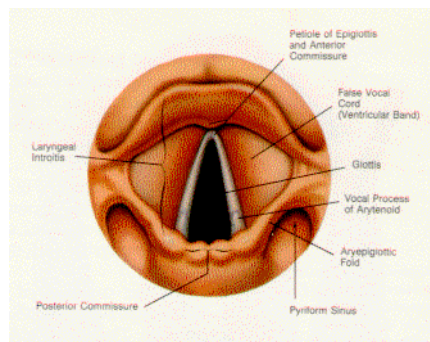
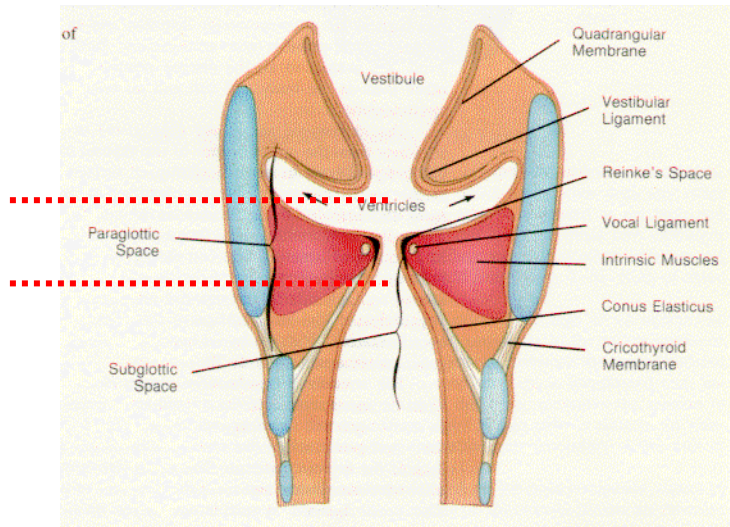


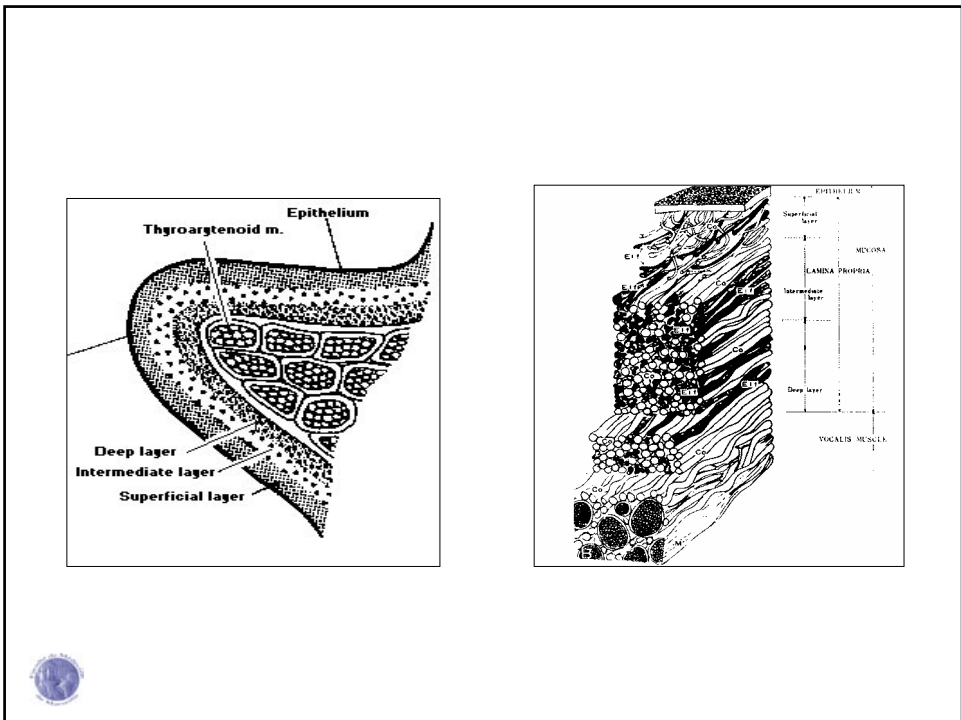
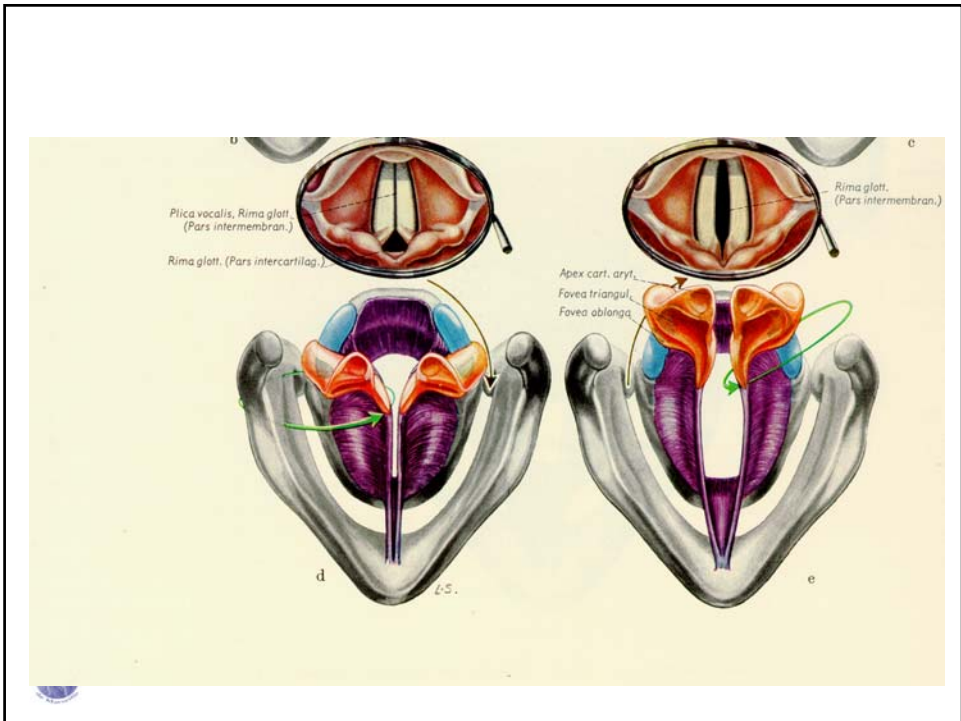


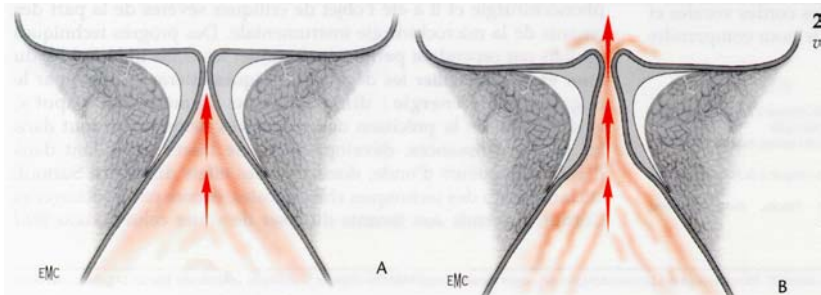
Le muscle crico-thyroïdien



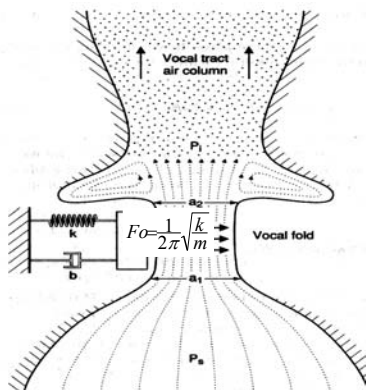








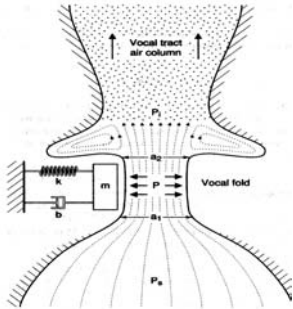
Le modèle à 1 masse



$$FO = \frac{1}{2\pi} \sqrt{\frac{k}{m}}$$



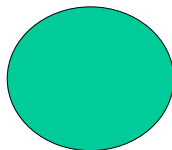
Initiation de la vibration

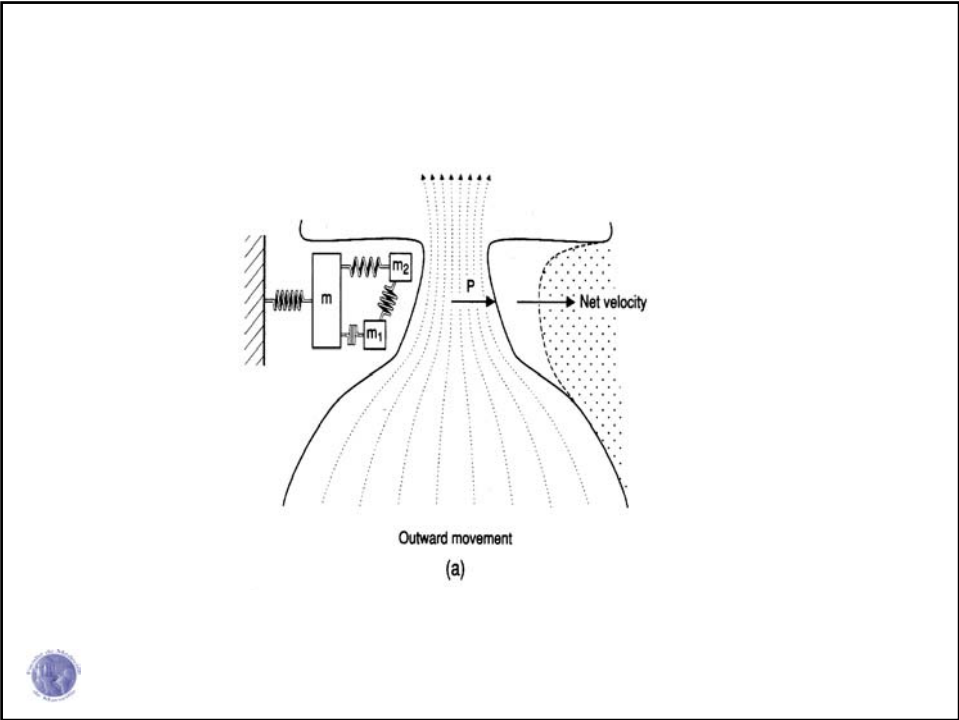
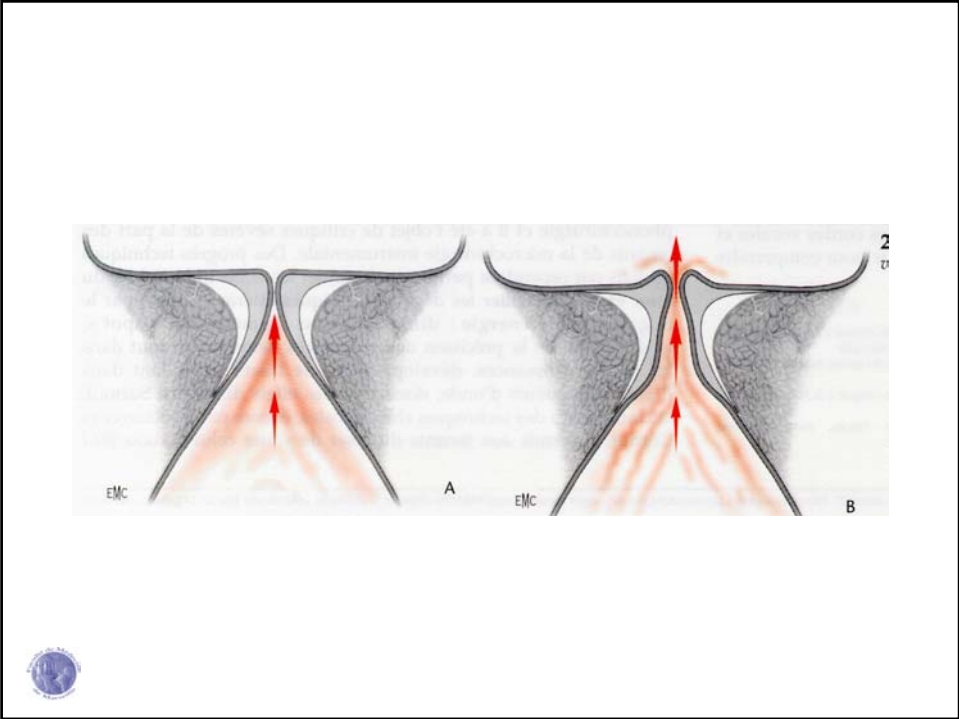


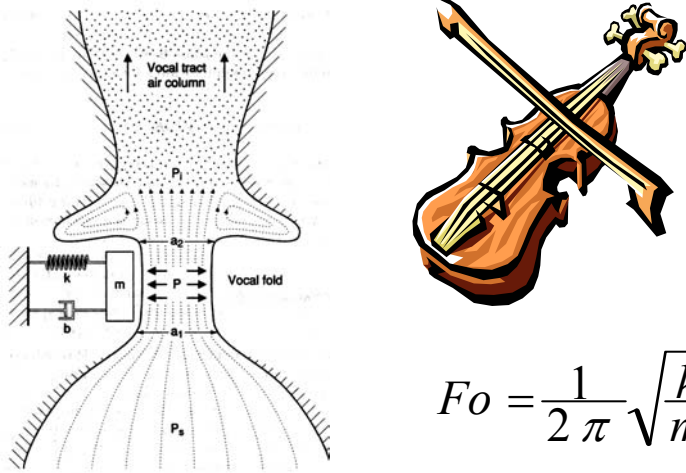
- raideur de la partie vibrante
- viscosité
- épaisseur du bord libre
- largeur de la fente glottique pré-phonatoire
- différence de pression trans-glottique




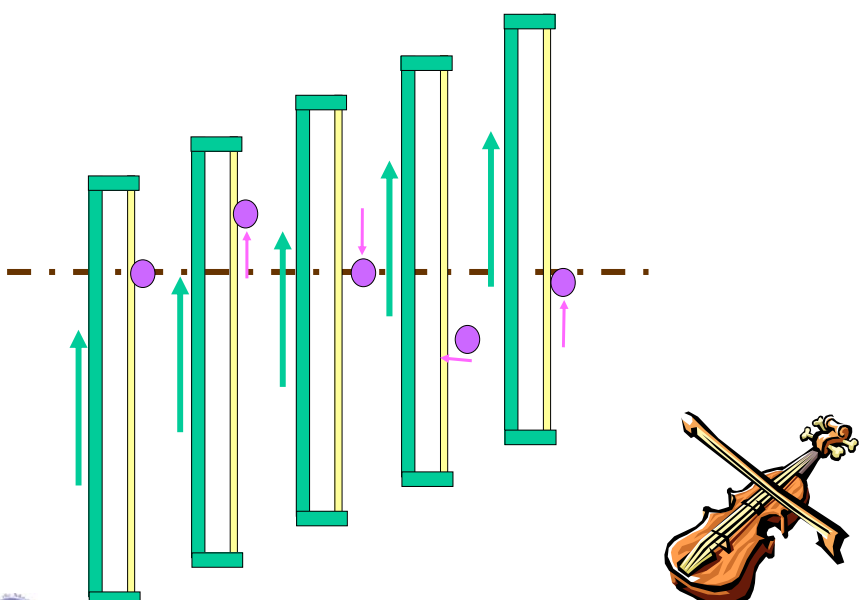
Entretien par effet Bernouilli






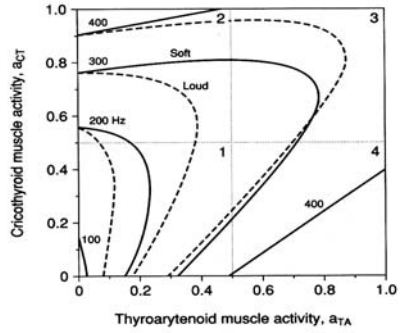
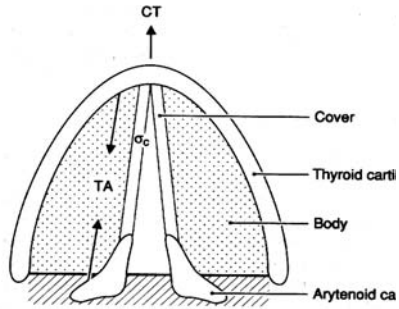


The diagram on the left illustrates a mechanical model of the vocal tract. It features a mass m connected to a wall by a spring with constant k and a damper with coefficient b . The mass is positioned between two cross-sectional areas, a_1 and a_2 . Air pressure P is applied to the mass from both sides. The pressure in the upper air column is P_1 and in the lower air column is P_2 . Arrows indicate the direction of air flow. To the right is a drawing of a violin.

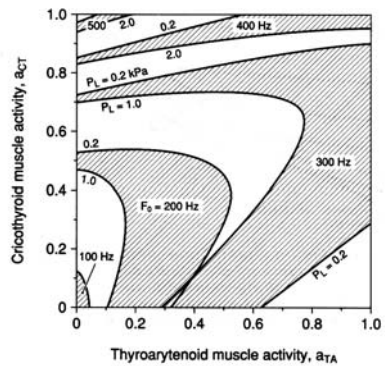
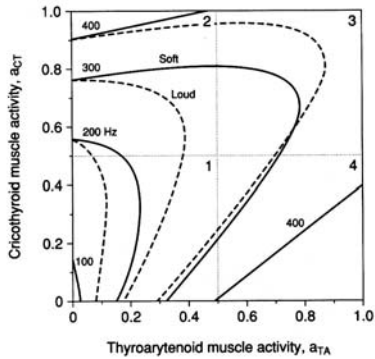
$$F_0 = \frac{1}{2\pi} \sqrt{\frac{k}{m}}$$



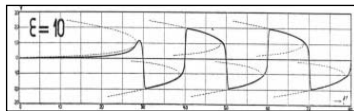
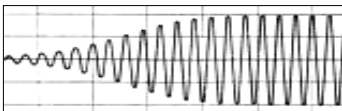
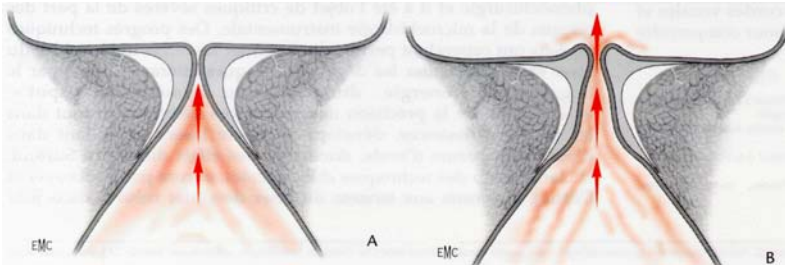
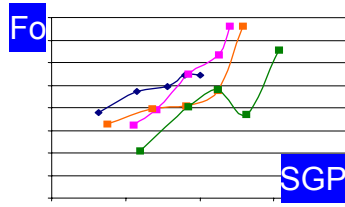
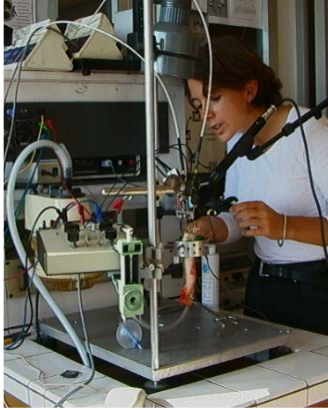
The diagram on the left shows a series of four vertical strings of increasing length, each with a purple dot representing a vibrating point. Green arrows indicate the upward and downward motion of the strings. To the right is a drawing of a violin.

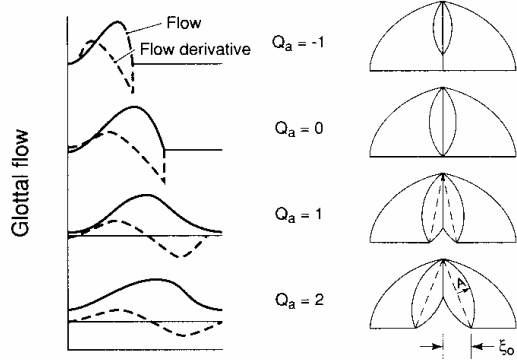
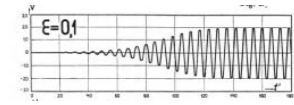
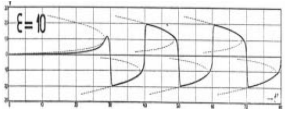




Le réglage de la hauteur tonale







OSCILLATEUR A DOUBLE MODALITE

